

# ASSA ABLOY - SW300

## Automatic swing door drive unit



World class operator to automate 1 metre width swing doors that weigh up to 420kg. The 70mm slim design without any compromise with performance: ideal for limited space and aesthetical requirements. Wide range of operating modes including PUSH&GO, Power Assist and LOW ENERGY. The SW300 is fully compliant with European standards (EN 16005) and fire approved (EN 1634-1), the perfect solution for creating and maintaining security, smoke and fire zones.

Basic connections for safety sensors, activation devices and mains power supply are all that is required to have the SW300 up and running. Simplicity of installation is key to the SW300 operator's success contributing to keeping it at the top of its class in the global market.

### Performance

- High performance with up to 420 kg door weight using a push arm and 1000mm door leaf configuration
- Reliable operator: strong components and real time self monitoring of the operator status
- Inverse option
- Safety and quality guaranteed by compliance with most European standards, including BS EN16005
- Tested to 1,000,000 cycles
- Very low noise level
- Suitable for fire doors

### Convenient & flexible

- Easy to install, to set, and to maintain: available PUSH or PULL configurations
- Easy program selection to expand functions
- Operator suitable for left & right hand applications
- Fully Automatic, Low Energy, Push & Go and Power assisted operation all included within the standard unit
- Double action breakout arm option

### Technical Specification

<b>Door weights &amp; widths</b> (see inertia graph page 3)	420kg @ 1.0m (Push Arm) - max leaf width 1.4m
	240kg @ 1.0m (Pull Arm) - max leaf width 1.4m
<b>Power supply</b>	100-240 V AC +10/-15%, 50/60 Hz
<b>Power Consumption</b>	max. 300W
<b>Opening time</b>	Variable Between 2.5 - 12 s (0-80°)
<b>Closing time</b>	Variable Between 4 - 12 s (90°-10°)
<b>Hold Open Time</b>	Adjustable 1.5 - 30 seconds
<b>Protection level</b>	IP20 Product (for internal use only)
<b>Dimensions mm</b> (H x D x L)	70mm(h) x 840mm(d) x 148mm(l)
<b>Operating temperature</b>	-20°C / +45°C
<b>Drive Unit Weight</b>	7.6kg

# ASSA ABLOY – SW300

### Pull

	Z
-	48mm
20mm	68mm
50mm	98mm
70mm	118mm

NOTE! Measurement 'Z' must be reduced by 20mm if lower adapter kit B\_1010296 is used.

A = -20-130  
Reveal

### Push

	X	Y
-	2 -25mm	51mm
20mm	25 - 45mm	71mm
50mm	45 - 75mm	101mm
70mm	75 - 95mm	121mm

0 - 367  
Reveal 'A'

### Sliding Push

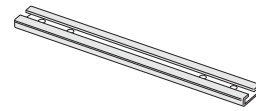
	X	Z
-	2 -25mm	48mm
20mm	25 - 45mm	68mm
50mm	45 - 75mm	98mm
70mm	75 - 95mm	118mm

Max. 114  
Reveal

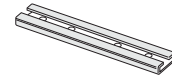
CL1

### Std Push Arm Extensions

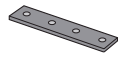
Std Push Arm Extensions	A = Reveal
None (Standard arm)	0-22mm
Extension L=345mm	22-137mm
Extension L=230mm+ joint part	137-252mm
Extension L=345mm+ 230mm+ joint part	252-367mm



345 mm extension  
Art. No.: 173005BK/SI



230 mm extension  
Art. No.: 173004BK/SI

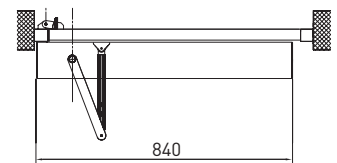
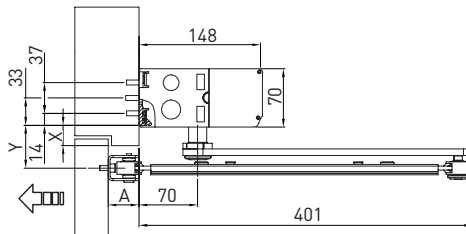


Joint part  
Art. No.: 173191

## Drive arm options

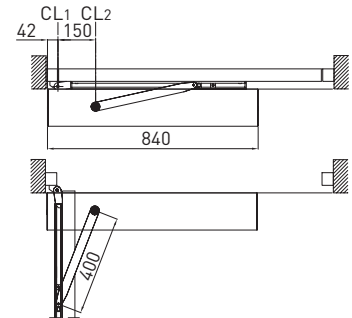
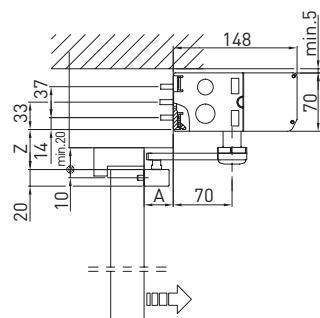
### Push Arm B\_1007965BK/SI

(Standard) Arm with articulated motion. Lintel depth 0 - 22mm. (Max.367 with extensions)



### Pull/Push Slide Arm B\_1008401BK/SI

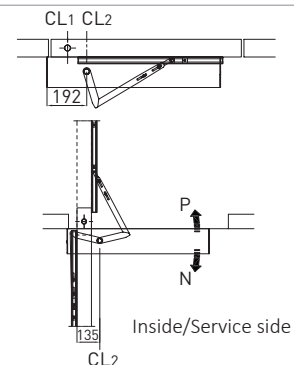
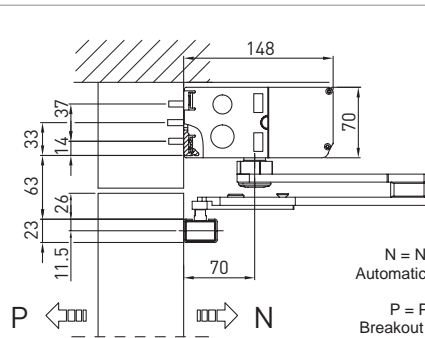
(Standard) Arm with sliding motion with guide channel, used for either Pull or Pushing applications. Lintel depths Pull -20 - 130mm & Push 114mm



### Double Acting Arm Kits

DIN RH Arm B\_1014090BK/SI  
DIN LH Arm B\_1014091BK/SI

One way automatic opening and opposite way panic opening. Identify the automatic opening, sliding PUSH or PULL. Opposite direction will be the manual breakout.



## ASSA ABLOY – SW300

### Technical specifications

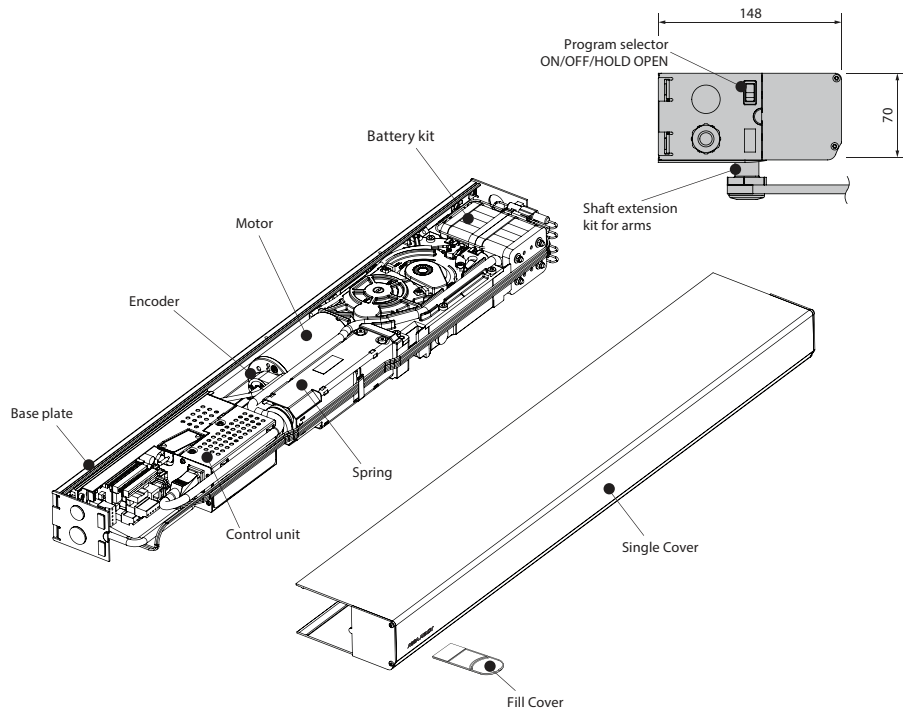
#### SW300 Performance

Automation systems for one or two-wing swing doors, with motorised opening and closure via motor + spring or spring only. Easy to install on new or existing doors.

An entrance equipped with the SW300 operator is always accessible due to battery back-up. The SW300 also monitors the battery for power and function, and gives an electronic indication if it is not working properly and needs to be replaced.

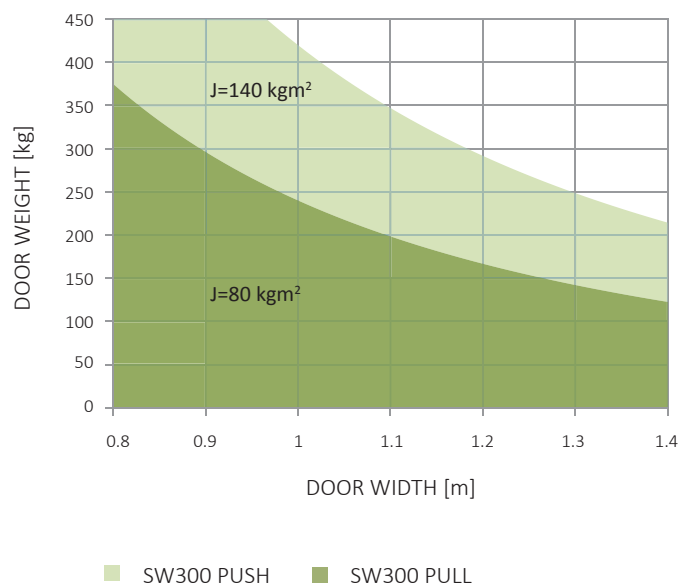
The operator is truly reliable during all weather conditions as it is not affected by stack pressure and wind load when opening and/or closing. Also, for your convenience, safety and quick exit, the SW300 can easily be manually opened, despite extended closing torque, due to sensor detection ensuring lowest manual opening force.

In addition to the standard version, there is a Double Acting (DA) function with possibility for manual opening in both directions with automatic reset.



SW300	
Power	100 - 240V~ +10/-15% 50/60 Hz
Door Size	PUSH arm system; size 4 - 7 PULL arm system; size 4 - 6
Power supply for accessories	24V DC 700 mA max.
Electro-mechanical locking device	Selectable; 12VDC, max.1200mA or 24V DC, max 600mA
Door opening angle	Push Arm 80° - 110° with reveal of 0 - 367mm. Pull Arm 80° - 110° with reveal of -20 - 130mm.
Type of operation	Motor opening Spring-plus-motor closure
Maximum door weight (see inertia graph)	240kg SW300 Pull Arm (1m wing) 420kg SW300 Push Arm (1m wing)
Minimum number of manoeuvres in AVERAGE conditions of use	1,000,000 cycles

INERTIA GRAPH



## ASSA ABLOY – SW300

### Accessories

SW300 drive units are complimented by a wide range of accessories giving additional choices and features.



**B\_1007965BK/SI Push Arm**  
Used if the operator is installed on the wall on the opposite side of the door swing.



**B\_173004BK/SI Push Arm Extension**  
For reveal L = 230mm



**B\_173191 Joint Plate for Push Arm extensions**  
For reveal L=235-300mm



**B\_173005BK/SI Push Arm Extension**  
For reveal L = 345mm



**B\_1010296BK/SI Lower Adapter M10**  
Used for 20mm lower installation height.

#### Double Acting Kits

One way automatic opening and opposite way panic opening. Identify the automatic opening, sliding PUSH or PULL, Opposite direction will be the manual breakout.



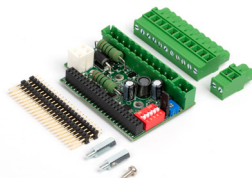
**B\_1014091BK/SI Double Acting Kit (DIN LH) Arm**



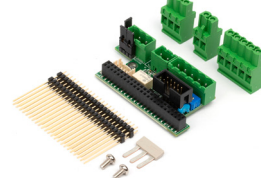
**B\_1014090BK/SI Double Acting Kit (DIN RH) Arm**



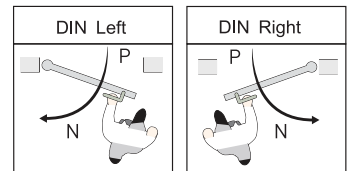
**B\_1008401BK/SI std Pull & Sliding Push Arm**  
Slim slide-track arm system. Max reveal A= -20-130 mm, Slide-track = 690mm.Used for pull and sliding push applications.



**B\_1003554 EXU-SI PCB (Optional)**  
Security extension board has inputs for electro-mechanical lock, program selector, batteries, KILL function, OPEN/CLOSE, KEY opening and outer impulse.



**B\_1003557 EXU-SA PCB**  
Safety board to interface door mounted safety sensors.



Operator/Door handing (DIN Right or DIN Left) is determined by which side the hinges are mounted seen from the swing side.



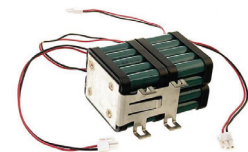
**B\_1019618BK/SI Drive Shaft Extension Kit M10**  
Includes 20 / 50 / 70mm.



**B\_1003583 SW300 Sync Cable**  
Used when connecting two units together for double door entrances.



**B\_1021281BK/SI Centre Cover Kit**  
Used for double door entrances, SAA Finish with Black or Silver end pieces L = 950mm.



**B\_1007823 (Optional)**  
Battery pack, works in conjunction with the security board (B\_1003554) to continue operation of the door during power failure.



**B\_1014317BK/SI Pull Arm Reveal Spacer**  
Size: 40 x 60mm  
Material: Aluminium



**SAP-2220A**  
Remotely located 3 position switch.



**SAP-4122 & SAP-4123 BEA 4SAFE Swing Door Safety Sensors**  
Aluminium profile with black anodized finish, L = 350 & 900mm.



**SAP-4150-2 BEA FlatScan Swing Door Safety Sensors**  
Laser Technology, left & right hand set.

Unit 14b, Wakes Hall Business Centre, Colchester Road, Wakes Colne, Essex CO6 2DY